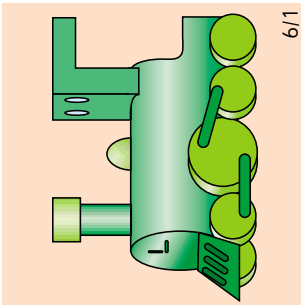


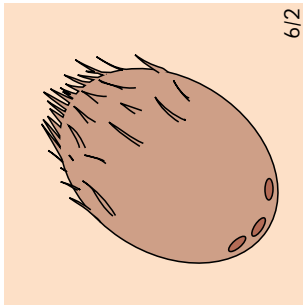
Starters Speaking

Summary of Procedures

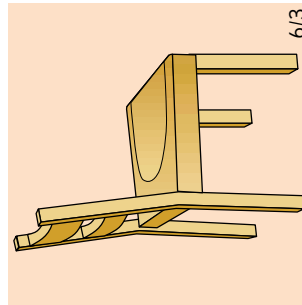
1. The usher introduces the child to the examiner.
2. The examiner asks the child to point out certain items on the scene card, e.g. 'Where's the ball?'
3. The examiner asks the child to put object cards at various locations on the scene card, e.g. 'Put the apple on the mat.'
4. The examiner asks questions about the scene card, e.g. 'What's this? What colour is it?'
5. The examiner asks questions about the child, e.g. 'How old are you?'



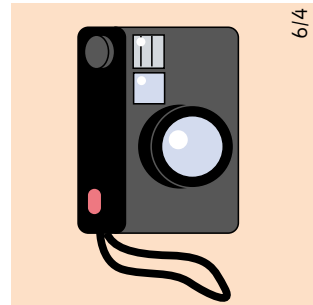
6/1



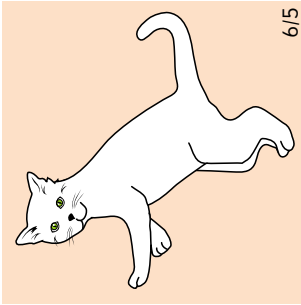
6/2



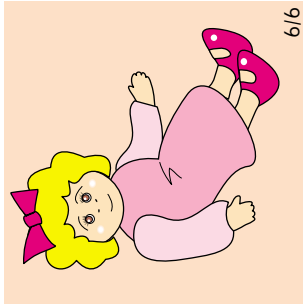
6/3



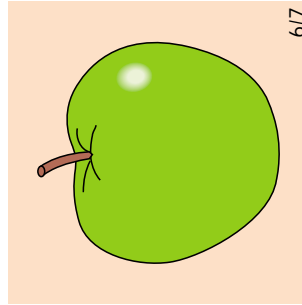
6/4



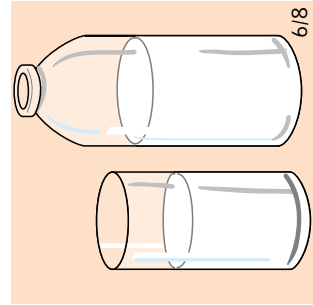
6/5



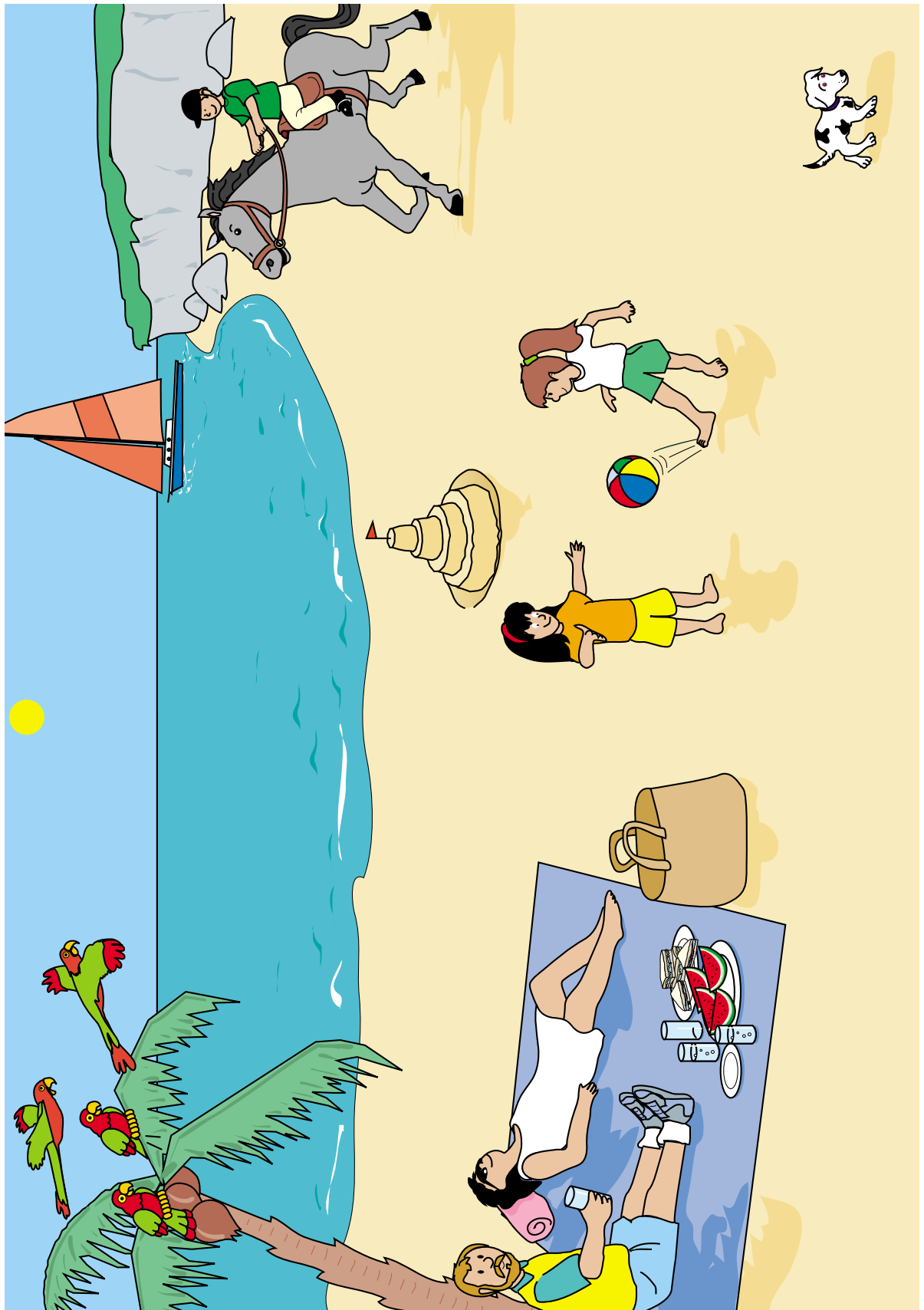
6/6



6/7



6/8



STARTERS SET 6