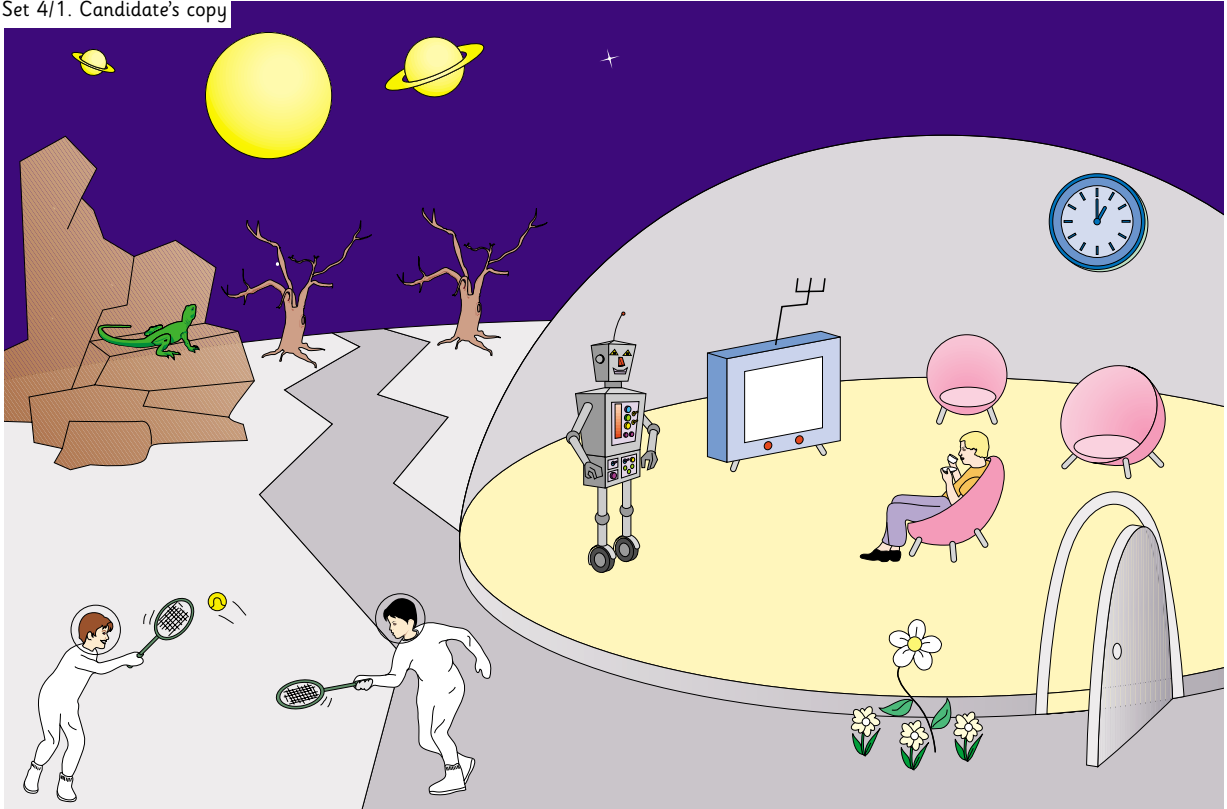


Flyers Speaking

Summary of Procedures

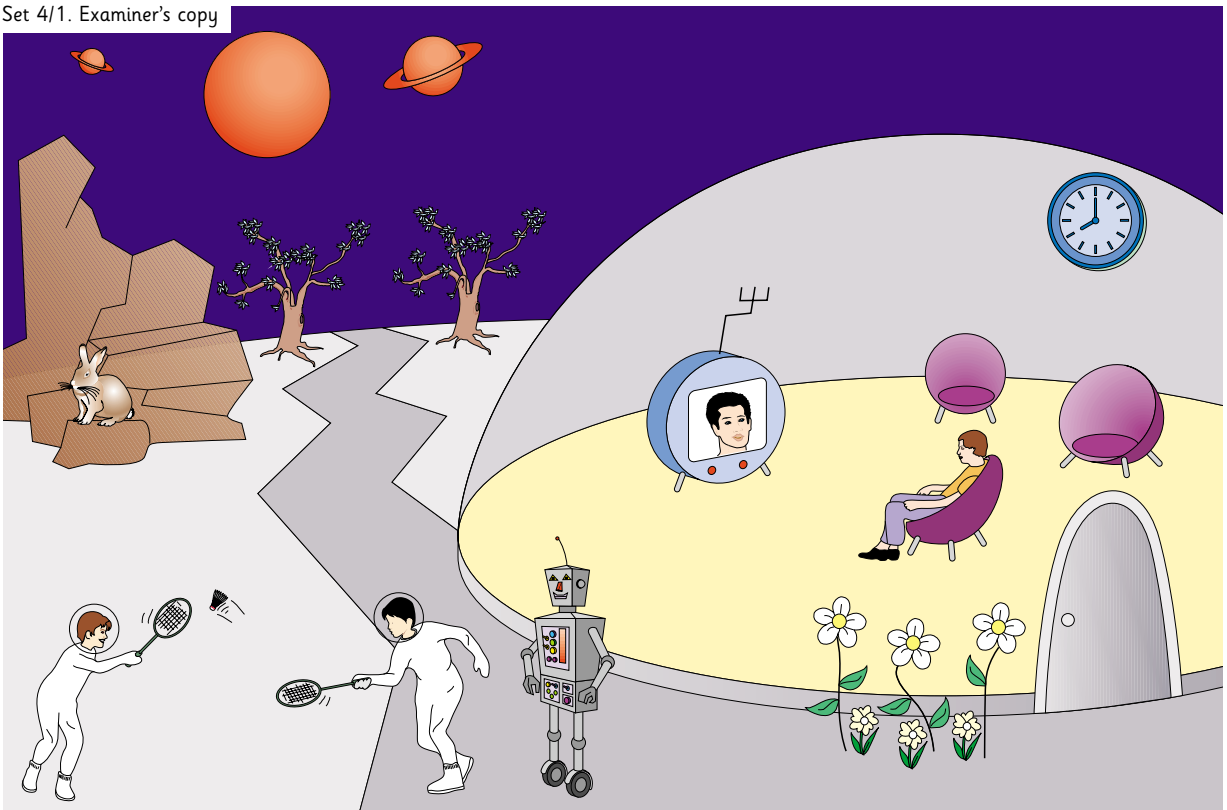
1. The usher introduces the child to the examiner. The examiner asks the child what his/her name is and how old he/she is.
2. The examiner gives the child the Candidate's copy of the Find the Difference card. The child is initially shown both copies, but then encouraged to look at the Candidate's copy only. The examiner then makes a series of statements about the picture shown on the Examiner's copy, and the child has to make a statement showing how the Candidate's copy is different, e.g. 'In my picture the planets are red,' 'In my picture the planets are yellow.'
3. The examiner gives the child the Candidate's copy of the Information Exchange card. The child is initially shown both copies, but then encouraged to look at the Candidate's copy only. The examiner first asks the child some questions related to the information the child has in complete form, e.g. 'What day is Mary's party?', which the child answers, using the information given on his/her card. The child then asks the examiner questions related to the information given in complete form on the Examiner's card (but in incomplete form on the Candidate's card), e.g. 'Who's going to Peter's party?'
4. The examiner begins to tell the story prompted by the Story card, e.g. 'The two girls are walking in the mountains. They're carrying rucksacks. Some people are skiing.' The examiner then asks the child to continue with the story.
5. The examiner asks questions about the child, e.g. 'Who is your best friend at school?'

Set 4/1. Candidate's copy



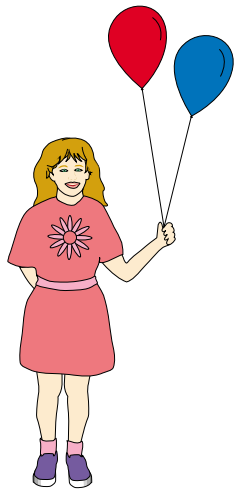
FLYERS SPEAKING. Find the Difference

Set 4/1. Examiner's copy



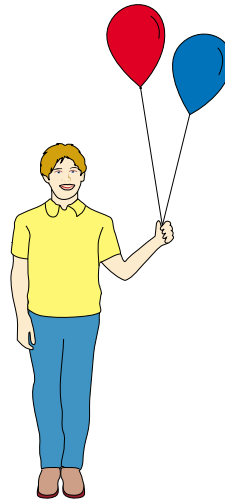
FLYERS SPEAKING. Find the Difference

Set 4/2. Candidate's copy



Mary's party

Day	Tuesday
Time	7:30
Where	pizza restaurant
Why	Mary's birthday
Who	everyone in her class

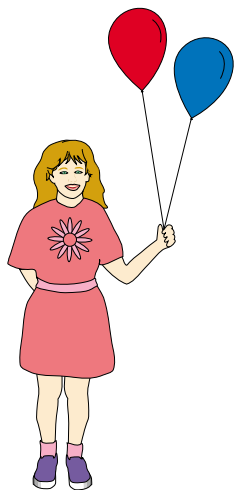


Peter's party

Day	?
Time	?
Where	?
Why	?
Who	?

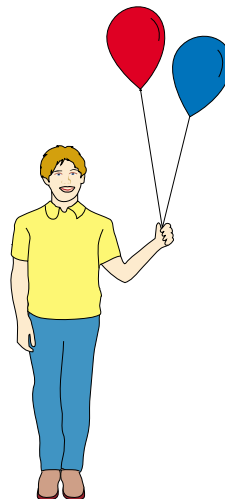
FLYERS SPEAKING. Information Exchange

Set 4/2. Examiner's copy



Mary's party

Day	?
Time	?
Where	?
Why	?
Who	?



Peter's party

Day	Saturday
Time	2:30
Where	Grandmother's house
Why	new baby brother
Who	all the family

FLYERS SPEAKING. Information Exchange

Set 4/3. Examiner's and Candidate's card



FLYERS SPEAKING. Tell the Story