

PET READING, PART 1 – SIGNS

1. A. You need a special type of ticket if you travel regularly.
B. The Super Weekly Saver ticket can help all travellers to save money.
C. Cheaper tickets are available for people who travel often.

If you take this journey regularly, you can save money with our Super Weekly Saver Ticket.

2. Which sentence is true?
A. You must keep walking on the grass.
B. You must walk on the grass
C. You can't walk on the grass

Please keep off the grass

3. Who is this sign meant for?
A. children
B. drivers
C. teachers

School entrance ahead
dead slow

4. The library ...
A. is open 5 days a week
B. closes later on Saturday.
C. is not open on Sunday

LIBRARY HOURS
OPEN
9.AM TILL 5.30 WEEKDAYS
9.30 A.M TILL 1 P.M SATURDAY

5. You can
A. park behind the restaurant.
B. park in front of the restaurant.
C. park next to the restaurant.

Restaurant
Free parking at rear

6. What does the sign mean?
A. You can let your dog run about.
B. You must tie your dog to a post.
C. You must keep your dog under control.

Dogs must be kept on leads

7. This sign is meant to be read by
A. policemen
B. postmen
C. burglars

Beware guard dog!

8. Wilson & Sons will
A. estimate the size of your house.
B. price the work at no cost.
C. build your house for free.

Wilson & Sons
Builders
Free estimates

9. A. Tom should go to the restaurant without Jess.
B. Jess can't go to the restaurant. She will meet Tom at the bar.
C. Jess will meet Tom at the bar.

Tom - I'm going to be late. Don't wait for me at the bar. I'll go straight to the restaurant and see you there - Jess.

10.
A. The group leader cannot go on the trip of Saturday.
B. The trip to London will take place on a different day.
C. Miriam will not be able to visit London at the weekend.

Miriam
Your group leader called. The date of your London excursion has been changed from Saturday to Sunday. Can you call her and tell her whether you still want to go?
Janet

11. What should people at the restaurant do first?

- A. Go to the bar
- B. Find a table
- C. Pay for their food

12.

- A. You can get your membership cards from the Private Rooms between 10am and 2pm.
- B. Anyone can visit the private rooms from 10am to 2pm.
- C. Only members can visit the Private Rooms from 10am to 2pm.

13.

- A. You need a special type of ticket if you travel regularly.
- B. Cheaper tickets are available for people who travel often.
- C. The Super Weekly Saver ticket can help all travellers to save money.

14. Students who do not sign up before Friday lunchtime.....

- A. will not be able to do afternoon activities next week.
- B. will have to work in the afternoons next week.
- C. won't be able to choose their afternoon activities next week.

15.

- A. The swimming pool is free to people who go to the Water Fitness Classes.
- B. The water fitness classes are free to people who swim ten times in a month.
- C. This month, you can go to Water Fitness Classes and use the swimming pool ten times without paying.

No table service.

Please choose a table number before ordering your food at the bar.

Pay for your food when you order.

The Private Rooms are open from 10am to 2pm to people with membership cards.

If you take this journey regularly, you can save money with our Super Weekly Saver Ticket.

Activity School Notice Board

Please sign up for next week's afternoon activities before Friday lunchtime. If you don't do this, we will select activities for you.

SPECIAL OFFER!

If you use the swimming pool ten times in one month, you can attend one Water Fitness Class free of charge!

PET READING, PART 2 - MATCHING

In this part, you have to match five people to eight texts.

The people all want to attend a course. Read the descriptions of eight courses. Decide which course would be the most suitable for each person. For Questions 1-5, select the best course.

A - Form and Colour

This is year-long course is perfect for people who want to learn about how to use a camera and who want to take it up as a profession. Students will learn how to use light and shade, colour and different shapes. The course will also teach students to change their work using computer technology. Tips will be given on how best to get started in the profession.

B - Practice makes Perfect

Learn about how to use computer software to make your work life easier. This course is designed for people who use computers regularly as part of their career, but who feel they are unable to make the most of the technology. Learn about new software for storing documents and photographs and keeping records. This evening class runs for ten weeks from September to December.

C - Armchair Explorer

This is a series of daytime lectures by people who have lived and worked in wild places. Each of the six talks will focus on a different continent. Lecturers will show photographs of the animals and plants, and explain why they

are only found in one area. Lecturers will include Leo Holland, a scientist from the Antarctic project, and Milly Oliphant, who researches birds in the Amazon rainforest. Tea and Biscuits provided.

D - Art Starter

Are you interested in a career in art? If so, this full-time, eight-week course will be perfect for you. Learn about different methods used by artists, including painting, drawing, photography and computer design. Artists will create work for an exhibition which will be displayed in the Town Hall for one month in September. Top businessmen and women from the design industry will be invited to attend the exhibition, so this could be a great start to your career!

E - Wild Design

Whether you want a career in art, or you just want to enjoy your hobby, this holiday course is for you. Wild Design is a two-week summer course situated on the wild coast of South Wales. We teach all kinds of art, including photography and painting, and the wild sea, beautiful flowers and great wildlife will definitely give you lots of creative ideas. Even if you already have a good understanding of art, you are sure to learn something new from our team of professional tutors.

F - Explore your Imagination

Do you want to show your friends a photograph of you beside the Egyptian pyramids or in the jungles of Borneo? Well now you can tell your friends that you have travelled the world without actually leaving the country! Join this evening class and learn how to use the latest technology and software to change photographs to a professional standard. You will also learn how to make your own computer designs using the computer programmes used by professionals.

G - Technology for You

Do you feel as if everyone is using a computer except you? Join in this five-day course and learn the basics. You'll learn how to store your personal files, send emails and use simple programmes to write and print letters. In the afternoons you will have the choice of either learning how to make Birthday Cards and other designs on a computer, or you can join our 'Basic computers for Work' class.

H - Wildlife Photographer

Travel to a different wild place every week and learn how to take photographs of animals, plants and scenery. Our expert teachers will advise you how to take the best pictures. This course will run for six weeks on Saturdays. Students should already have a good understanding of photography and their own equipment. The class is suitable for everyone, as there is very little walking involved.

Question 1

Harriet is 71, and is interested in painting and drawing. She would like to go somewhere in the summer where she can learn new tips and paint attractive scenery.

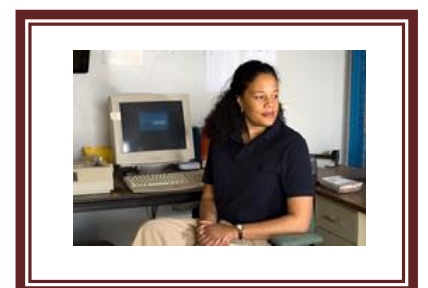
- A - Form and Colour
- B - Practice makes Perfect
- C - Armchair Explorer
- D - Art Starter
- E - Wild Design
- F - Explore your Imagination
- G - Technology for You



Question 2

Belinda works for a large Art Company and she feels she needs to improve her computer skills. She already has a basic understanding of some common computer programmes, but she wants to learn how to organise her work and store information.

- A - Form and Colour
- B - Practice makes Perfect
- C - Armchair Explorer
- D - Art Starter
- E - Wild Design
- F - Explore your Imagination
- G - Technology for You



Question 3

Jenny is interested in a career in design, and wants to learn how to create art and change photographs using special computer programmes. She wants a course that will fit into her normal school day.

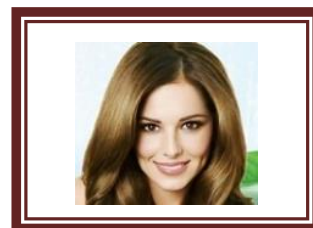
- A - Form and Colour
- B - Practice makes Perfect
- C - Armchair Explorer
- D - Art Starter
- E - Wild Design
- F - Explore your Imagination
- G - Technology for You



Question 4

Ngan Phuong Vy is unable to travel because she has difficulty walking, but she wants to learn more about the wildlife and scenery in different parts of the world.

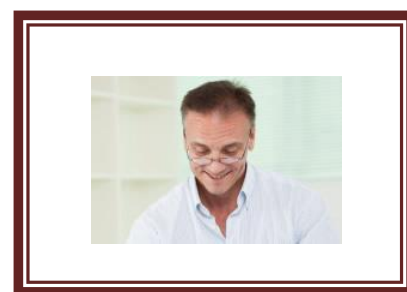
- A - Form and Colour
- B - Practice makes Perfect
- C - Armchair Explorer
- D - Art Starter
- E - Wild Design
- F - Explore your Imagination
- G - Technology for You



Question 5

Chris wants a change in career, so he's looking for a full-time course in which he can learn everything there is to know about photography and how to use computers to change and sell his work.

- A - Form and Colour
- B - Practice makes Perfect
- C - Armchair Explorer
- D - Art Starter
- E - Wild Design
- F - Explore your Imagination
- G - Technology for You



PET READING, PART 3 - TRUE/FALSE QUESTIONS

In this part of the exam you need to read a long text and answer 10 True/False questions.

Read the text about some English villages. Then look at the sentences at the bottom of the page and decide if each sentence is True or False.

Explore the Villages around Hartbridge

Many visitors come to Hartbridge to see the wonderful art galleries and museums, the beautiful buildings and the fantastic parks. Few people go outside the city, and so they miss out on experiencing the scenery and the fascinating history of this beautiful area. This brochure will tell you what you can see if you take a short bus ride out of the city.

Camberwell

The historic village of Camberwell was once the home of the wealthy Hugo family. They lived in a huge country house, Camberwell Court, and owned all the land in the area. The family sold their house in the 1940s, and it is now open to the public. You can spend a whole day walking around the house and gardens. There is a small exhibition about the family, a children's play area, a gift shop and a restaurant. But the village of Camberwell is also worth a visit. There are some beautiful cottages with well kept gardens, and there is a small church which dates back to the eleventh century. To get to Camberwell, take Bus 46 from the Bus station. Buses leave every two hours.

Hidcot

Hidcot is an attractive village situated on the River Owell. Wildlife lovers should visit the Nature Park to the south of the village, where there are large numbers of rare birds and flowers. However, you will probably see plenty of wildlife from the bridge in the village centre! In Hidcot, you can take a two-hour river cruise - a great way to see the countryside and learn about the local wildlife from a guide. If you prefer to explore the river by yourself, it's well worth walking one and a half miles along the river to the pub 'The Boat' which cannot be reached by road. Here, you can hire small boats and explore the river at your leisure. To get to Hidcot, take Bus 7A to Reeford. Hidcot is half way between Hartbridge and Reeford.

Tatterbridge

The beautiful village of Tatterbridge was home to the children's writer Jane Potter, whose stories of Benjamin Bear are loved by adults and children around the world. Jane Potter's home is now a museum and tea shop, and is well worth a visit just for its wonderful gardens. It also has a gift shop where you can buy souvenirs and books. Tatterbridge has a number of interesting shops including an excellent cake shop, and 'Wendy's Giftshop' where you can find lots of unusual gifts made by hand by local artists. Lovers of Jane Potter's books should also walk to the Green Valley woods, which have not changed since Jane Potter wrote her stories there one hundred years ago. To get to Tatterbridge, take Bus 4 from outside the cinema. It takes about 40 minutes to get there.

Moordale

This old industrial village is the highest village in the area. Here in the hills, coal was found in the late eighteenth century, and people came here in great numbers to take it out of the ground and transport it to the nearby towns. Many industries grew up in the area, including a paper factory and a cotton factory. The industries all closed down in the nineteenth century, and since then Moordale has gone back to being a quiet farming village. However, if you walk from the village centre up the steep hill to the north, you can still see the paths where horses used to carry the coal. There is a four mile walk around the village which has some amazing views, but walkers are must be careful as the path is steep in places and they could slip. To get to Moordale, take Bus 7A to Reeford, and then take the number 38 bus to Moordale.

	True	False
1. It is unusual for visitors to visit the villages near Hartbridge.
2. The Hugo family allows people to visit their current home.
3. The leaflet advises visitors not to spend all day at Camberwell Court.
4. You can hire small boats from the bridge in Hidcot.
5. You can take the bus directly to 'The Boat' pub near Hidcot.
6. The leaflet says that the gardens are the best part of Jane Potter's home.
7. Jane Potter wrote her books in the Green Valley woods.
8. You can visit the paper factory and the cotton factory in Moordale.
9. You will see horses on farms as you walk around Moordale.
10. You can get to all four villages directly from Hartbridge.

PET READING, PART 4 - COMPREHENSION QUESTIONS

In this part of the exam you need to read a long text and answer 5 multiple choice questions. Read the text and then answer questions 1-5.

Different Colours can affect us in many different ways; that's according to Verity Allen. In her new series 'Colour me Healthy', Verity looks at the ways that colours can influence how hard we work and the choices we make. They can even change our emotions and even influence how healthy we are.

‘Have you ever noticed how people always use the same colours for the same things?’ says Verity. ‘Our toothpaste is always white or blue or maybe red. It’s never green. Why not? For some reason we think that blue and white is clean, while we think of green products as being a bit disgusting. It’s the same for businesses. We respect a company which writes its name in blue or black, but we don’t respect one that uses pink or orange. People who design new products can use these ideas to influence what we buy.’

During this four-part series, Verity studies eight different colours, two colours in each programme. She meets people who work in all aspects of the colour industry, from people who design food packets, to people who name the colours of lipsticks. Some of the people she meets clearly have very little scientific knowledge to support their ideas, such as the American ‘Colour Doctor’ who believes that serious diseases can be cured by the use of coloured lights. However, she also interviews real scientists who are studying the effects of green and red lights on mice, with some surprising results.

Overall, it’s an interesting show, and anyone who watches it will probably find out something new. But because Verity is goes out of her way to be polite to everyone she meets on the series, it’s up to the viewers to make their own decisions about how much they should believe.

1. *What is the writer doing in this text?*

- A. giving information about how colours influence us
- B. reporting what happens in a new television series
- C. giving information about a television presenter
- D. giving his opinion of a recent television show

2. *Which of the following shows the probable content of the four shows?*

- A. Part 1 – Health; Part 2 – Products and Industry; Part 3 – Emotions; Part 4 – Decisions
- B. Part 1 – Blue and Black; Part 2 – Red and Orange; Part 3 – White and Grey; Part 4 – Green and Yellow
- C. Part 1 – Meeting Designers; Part 2 – Meeting People who Name Colours; Part 3 – Meeting Doctors; Part 4 – Meeting Scientists
- D. Part 1 – Cleaning Products; Part 2 – Make-up; Part 3 – Clothes; Part 4 – Food

3. *According to Verity, why is a knowledge of colour important?*

- A. It can help you to choose the best products.
- B. It can give you new ideas.
- C. It can help you to change people’s minds.
- D. It can help you to sell products.

4. *Who does the writer respect least?*

- A. Verity Allen
- B. The people who name lipsticks
- C. The ‘Colour Doctor’
- D. The scientists who work with mice

5. *Which of the following would make a good title for the text?*

- A. Enjoy it, but don’t believe everything.
- B. Another great show from Verity Allen! Five Stars!
- C. Don’t miss this if you work in Business!
- D. Watch this programme! It will make you healthy!

PET READING, PART 5 - TEXT WITH GAPS

*In this part of the exam you need to fill 10 gaps in a short text.
Read the text below and choose the correct word for each space.*

Easter Island

Easter Island is a small triangle of rock situated in the Pacific Ocean. It’s about 2,000 miles (1) ...the nearest city. Easter Island is (2) ... for its statues. Hundreds of these huge, stone faces can be (3)all over the island. Who made them? How (4).....they move these giant pieces of rock? What happened (5).....the people who lived there? Studies show that people (6)arrived on the island about 1600 years ago. They had a very advanced culture. They made many



objects and they had their (7)written language. However, the number of people on the island grew and grew (8)it reached about 10,000 people. Soon there were too many people and there wasn't (9)...food to eat. A terrible war started and (10)... of the statues were broken. When western explorers (11).....the island on Easter Day in 1722, the huge rock statues were the only sign that a great society had once lived there.

- | | | | |
|-----------------|----------------|-------------|----------------|
| 1. A. for | B. from | C. on | D. by |
| 2. A. important | B. interesting | C. famous | D. fascinating |
| 3. A. looked | B. located | C. found | D. situated |
| 4. A. have | B. were | C. had | D. did |
| 5. A. to | B. with | C. about | D. four |
| 6. A. once | B. first | C. just | D. already |
| 7. A. only | B. own | C. clever | D. self |
| 8. A. so | B. until | C. although | D. because |
| 9. A. many | B. some | C. too | D. enough |
| 10. A. many | B. few | C. lot | D. enough |
| 11. A. invented | B. discovered | C. sailed | D. came |

Answers

Easter Island

Easter Island is a small triangle of rock situated in the Pacific Ocean. It's about 2,000 miles FROM the nearest city. Easter Island is FAMOUS for its statues. Hundreds of these huge, stone faces can be FOUND all over the island. Who made them? How DID they move these giant pieces of rock? What happened TO the people who lived there? Studies show that people FIRST arrived on the island about 1600 years ago. They had a very advanced culture. They made many objects and they had their OWN written language. However, the number of people on the island grew and grew UNTIL it reached about 10,000 people. Soon there were too many people and there wasn't ENOUGH food to eat. A terrible war started and MANY of the statues were broken. When western explorers DISCOVERED the island on Easter Day in 1722, the huge rock statues were the only sign that a great society had once lived there.

PET WRITING PART 1

There are 9 questions in this quiz. Here are some questions about music. For each question, complete the second sentence so that it means the same as the the first sentence.

*Use no more than **three** words. Type only the missing words in the blank space.*

- I haven't been to a concert for a long time.
It's a long time since a concert.
- Why don't you learn a musical instrument?
If I were you,learn a musical instrument.
- If you don't practise the piano every day, you won't improve.
You won't improve unless.....the piano every day.
- There are only a few concerts this month.
There aren't veryconcerts this month.
- This room is too small for us to play music in.
This room isn't.....for us to play music in.
- I prefer playing the guitar to playing the piano.
I like playing the guitar playing the piano.
- It took them a long time to decide which concert to go to
They spent a long timewhich concert to go to.
- We could not take our instruments on the plane.
We were not take our instruments on the plane.
- The neighbour complained the music at our party was too loud.
We had to play the music more.....because the neighbour complained.

PRELIMINARY ENGLISH TEST (PET) WRITING PART 2
DIFFICULTY: B1, INTERMEDIATE

In the writing section of the Preliminary English test there are three parts. In part 2 you have to write a short message.

Your family is visiting London next month. You have an English pen friend called Zara who also lives in London. You would like to meet here when you go to London.

Write an email to Zara. In your email, you should:

- say when your family is coming to London
- ask if you can meet up, and suggest a day
- suggest what you can do together.

Write 35-45 words.
Email about visit to London

..... ,
.....
..... ? ..
..... ,

KEY

Email about visit to London

*Dear Zara,
My family is visiting London next month from 13th – 20th December. I would love to meet you while I am in London . My dad is taking me and my brother to London zoo on Saturday 15th December. Why don't you come too? It would be great to see you again.
Love,
ngafuvy*

PRELIMINARY ENGLISH TEST (PET) WRITING PART 3
DIFFICULTY: B1, INTERMEDIATE

In the writing section of the Preliminary English test there are three parts. In part 3 you have a choice between writing to someone and writing a story. In this practice test you are going to write a **letter**.

This is part of a letter you receive from your penfriend James.

*In your next letter, please tell me about the music you like.
What's your favourite kind of music? Do you play an instrument?
Now write a letter, answering your penfriend's questions.*

Letter to a friend

..... ,
..... ,
..... !
..... ? ?
.....

KEY

*Dear James,
Thank you for your letter , which came yesterday . It's always good to hear from you.
I play the guitar quite a lot . I am not very good but I enjoy it. I often go to my friend's house and we play together. I don't go to many concerts as I live in a small town and not many bands come here. At parties we often dance and I like that ! I like rock and roll music best . I listen to a lot of music on my mp3 player . I have usually got it with me.*

*What about you? Do you play an instrument?
Write soon,
ngafuvy*